
Fair Isle Jumper

Part three of the knit along.

Please read the pattern in full before starting and check out the notes section at the end. If you find something a bit weird, please contact me, I am always grateful for feedback on patterns.

Sizes

	Small	Medium	Large	Extra Large
Bust measurement	86cm (34 in)	91cm (36 in)	97cm (38 in)	115cm (45in)
Finished size	94cm (37)	101cm (40)	110cm (44in)	135cm (53in)

Working in the round

Knit 0 (1, 2, 3) rounds in **MC**.

Side stitches are worked in the current background color, not in pattern.

Work chart 2 with **MC** and **CCB**. Break **MC** at the end of chart 2.

Knit 1 (3, 5, 7) rounds in **CCB**.

K1 **CCB**, K1 **CCC** to end. Break **CCB**.

Knit 1 (2, 3, 4) rounds **CCC**.

Work chart 3 with **CCC** and **CCD**. Once you've done round 8 of chart 3 break **CCC** and join **CCB**, continuing to work as charted.

Working Flat

Back & front alike until **

Work 0 (1, 2, 3) rows in **MC**.

Side stitches are worked in the current background color, not in pattern.

Work chart 2 with **MC** and **CCB**. Break **MC** at the end of chart 2.

Work 1 (3, 5, 7) rows in **CCB**.

(RS) K1 **CCB**, K1 **CCC** to end. Break **CCB**. / (WS) P1 **CCB**, P1 **CCC** to end. Break **CCB**.

Work 1 (2, 3, 4) rows **CCC**.

Work chart 3 with CCC and CCD. Once you've done row 8 of chart 3 break CCC and join CCB, continuing to work as charted.

Charts

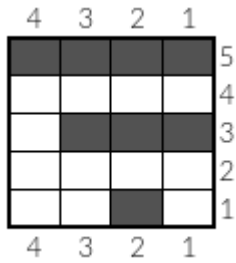


Chart 2

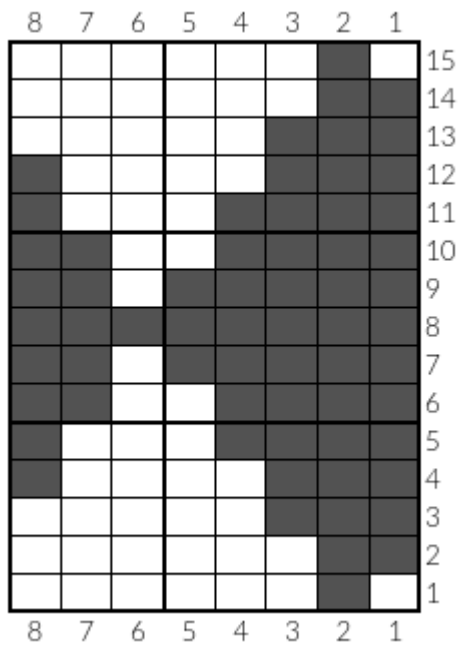


Chart 3

Written instructions

Chart 2

In the round

Round 1 – K1 MC, K1 CC, K2 MC. Repeat to end.

Round 2 – K MC to end.

Andi Gillies – Spam Valley

Round 3 – K3 MC, K1 CC

Round 4 – K MC to end

Round 5 – K CC to end

Working flat

Row 1 – 1 MC, 1 CC, 2 MC. Repeat to end.

Row 2 – MC to end.

Row 3 – 3 MC, 1 CC

Row 4 – MC to end

Row 5 – CC to end

Chart 3

In the round

Round 1 – K1 MC, K1 CC, K7 MC. Repeat to end.

Round 2 – K2 CC, K6 MC

Round 3 – K3 CC, K5 MC

Round 4 – K3 CC, K4 MC, K1 CC

Round 5 – K4 CC, K2 MC, K2 CC

Round 5 – K4 CC, K2 MC, K2 CC

Round 7 – K5 CC, K1 MC, K2 CC

Round 8 – K CC

Round 9 – K5 CC, K1 MC, K2 CC

Round 10 – K4 CC, K2 MC, K2 CC

Round 11 – K4 CC, K2 MC, K2 CC

Round 12 – K3 CC, K4 MC, K1 CC

Round 13 – K3 CC, K5 MC

Round 14 – K2 CC, K6 MC

Round 15 – K1 MC, K1 CC, K7 MC

Working flat

Row 1 – 1 MC, 1 CC, 7 MC. Repeat to end.

Row 2 – 2 CC, 6 MC

Andi Gillies – Spam Valley

Row 3 – 3 CC, 5 MC

Row 4 – 3 CC, 4 MC, 1 CC

Row 5 – 4 CC, 2 MC, 2 CC

Row 5 – 4 CC, 2 MC, 2 CC

Row 7 – 5 CC, 1 MC, 2 CC

Row 8 – CC

Row 9 – 5 CC, 1 MC, 2 CC

Row 10 – 4 CC, 2 MC, 2 CC

Row 11 – 4 CC, 2 MC, 2 CC

Row 12 – 3 CC, 4 MC, 1 CC

Row 13 – 3 CC, 5 MC

Row 14 – 2 CC, 6 MC

Row 15 – 1 MC, 1 CC, 7 MC

Notes

Slip stitches

At the start of each row, when working flat either after dividing for the neck, or working the entire jumper flat, slipping a stitch makes it easier to sew up, as well as facilitating picking up stitches later on for the neckline or sleeves.

Side stitches

1 and 1 fair isle also looks good, if you don't want a solid colour stripes at each side. This is what I did for my demo

