
Fair Isle Jumper

Part four of the knit along.

Please read the pattern in full before starting and check out the notes section at the end. If you find something a bit weird, please contact me, I am always grateful for feedback on patterns.

Sizes

	Small	Medium	Large	Extra Large
Bust measurement	86cm (34 in)	91cm (36 in)	97cm (38 in)	115cm (45in)
Finished size	94cm (37)	101cm (40)	110cm (44in)	135cm (53in)

Working in the round

Knit 0 (1, 2, 3) rounds in **CCB**.

K1 **CCB**, K1 **CCE**.

K1 round **CCE**.

K1 **CCE**, K1 **CCC**.

Work Star chart, chart 4 using **CCE** for the star details, and **CCC** as the first background colour, then switch to **CCB**, and back to **CCC** as indicated on the chart.

Working Flat

Back & front alike until **

Work 0 (1, 2, 3) rows in **CCB**.

K1 **CCB**, K1 **CCE**.

K1 round **CCE**.

K1 **CCE**, K1 **CCC**.

Work Star chart, chart 4 using **CCE** for the star details, and **CCC** as the first background colour, then switch to **CCB**, and back to **CCC** as indicated on the chart.

Charts

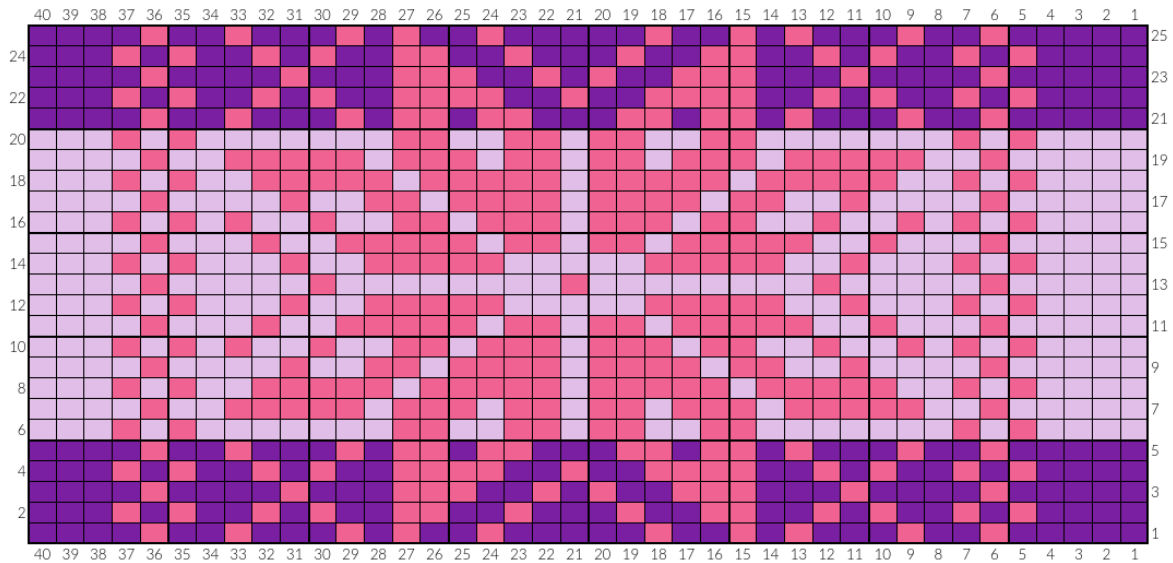


Chart 4, star chart

Written instructions

Pending, let me know if you need these urgently!

Chart 4

In the round

Flat

Notes

Slip stitches

At the start of each row, when working flat either after dividing for the neck, or working the entire jumper flat, slipping a stitch makes it easier to sew up, as well as facilitating picking up stitches later on for the neckline or sleeves.

Side stitches

1 and 1 fair isle also looks good, if you don't want a solid colour stripes at each side. This is what I did for my demo